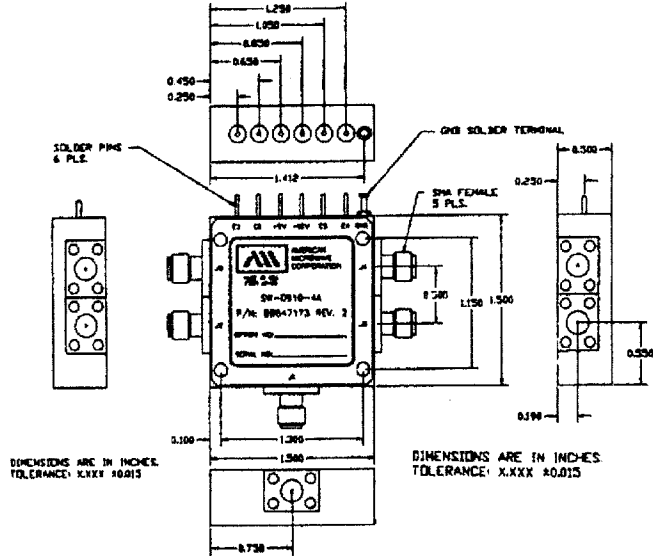


**AMERICAN MICROWAVE CORPORATION**

## 2kW-HIGH POWER, LOW LOSS REFLECTIVE, SP4T PIN DIODE SWITCH

- 2kW-HIGH POWER
- 8.5 TO 10.5 GHz
- SMALL SIZE



### AMC MODEL No: SW-0910-4A

#### SPECIFICATIONS:

- |                   |  |
|-------------------|--|
| • FREQUENCY RANGE | : 8.5 TO 10.5 GHz  |
| • INSERTION LOSS  | : 3.0 dB MAX., 2.5 dB TYP.   |
| • ISOLATION       | : 50 dB MIN., 55 dB TYP.   |
| • VSWR (ON/OFF)   | : 2.0:1  |
| • SWITCHING SPEED | : RISE : 100ns MAX., 45ns TYP.   |
|                   | : FALL : 200ns MAX., 180ns TYP.  |
|                   | : ON : 300ns MAX., 160ns TYP.  |
|                   | : OFF : 300ns MAX., 280ns TYP.   |
| • RF POWER        | : 2kW PEAK/2W AVERAGE<br>(0.2 TO 1.5µS PULSE WIDTH<br>600 TO 4000 Hz PRF RATE) |
|                   | -OR-   |
|                   | : 100W PEAK/5W AVERAGE<br>(0.2 TO 65µS PULSE WIDTH<br>UP TO 150kHz PRF RATE)   |
| • CONTROL         | : TTL COMPATIBLE (4 Independent controls)                                      |
| • POWER SUPPLY    | : +5vdc @ 200mA MAX., 160mA TYP.   |
|                   | : -15vdc @ 60mA MAX., 40mA TYP.  |
| • SIZE            | : 1.5" X 1.5" X 0.5"   |
| • WEIGHT          | : <3.0 oz.   |

7311 G GROVE ROAD, FREDERICK, MARYLAND 21701 • Tel. (301) 662-4700 • Fax (301) 662-4938